

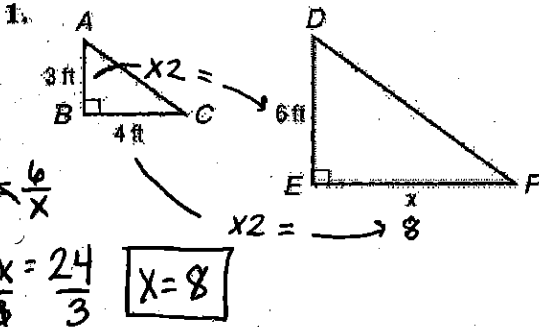
Key

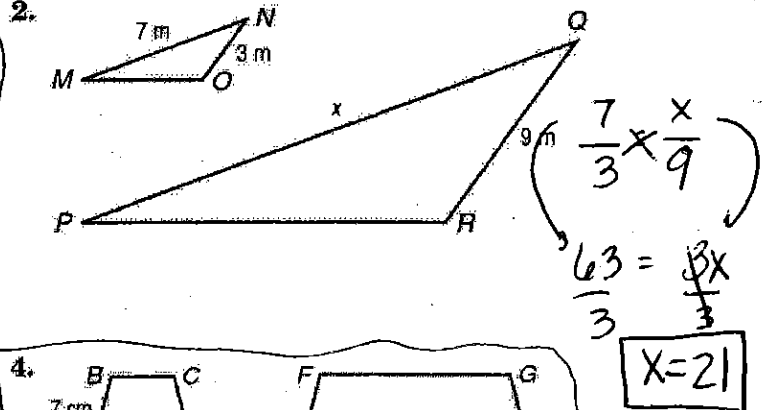
NAME _____ DATE _____ PERIOD _____

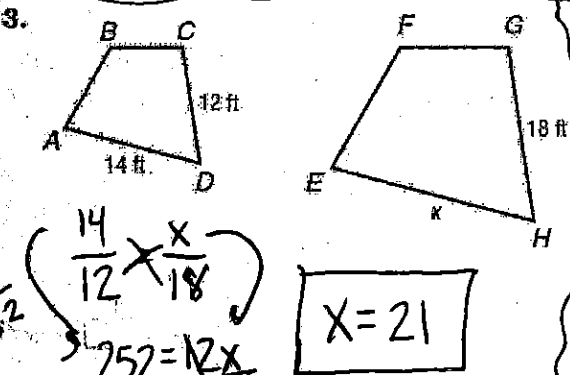
Skills Practice

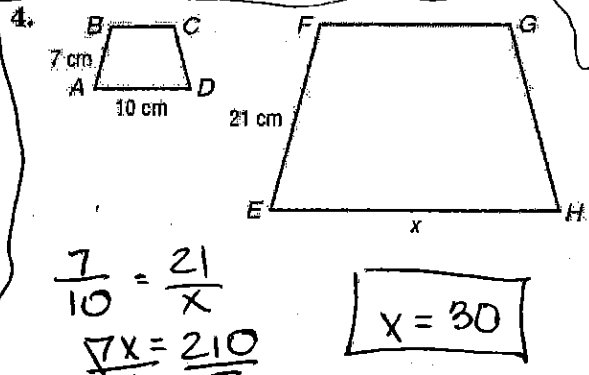
Similar Figures - same shape, not necessarily same size

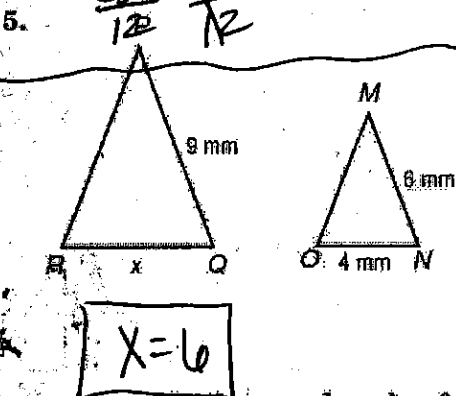
Find the value of x in each pair of similar figures.

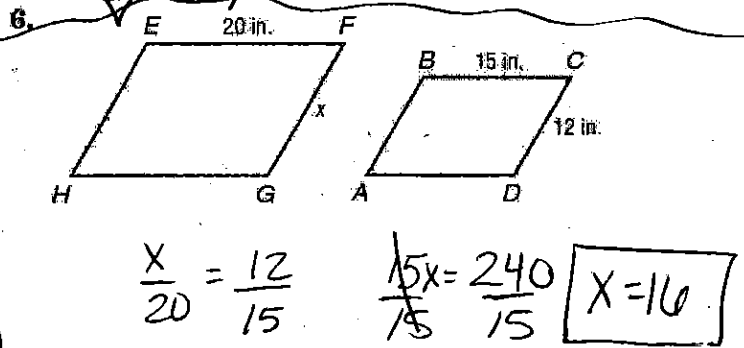
1. 

2. 

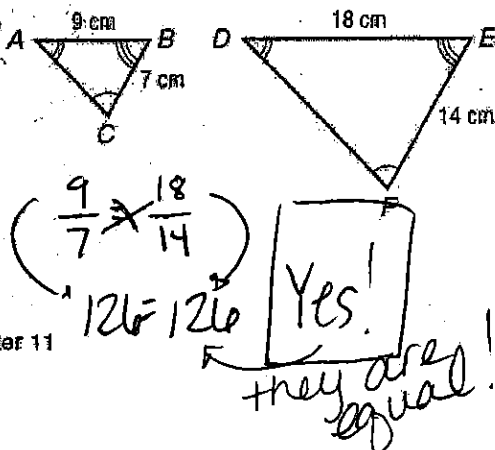
3. 

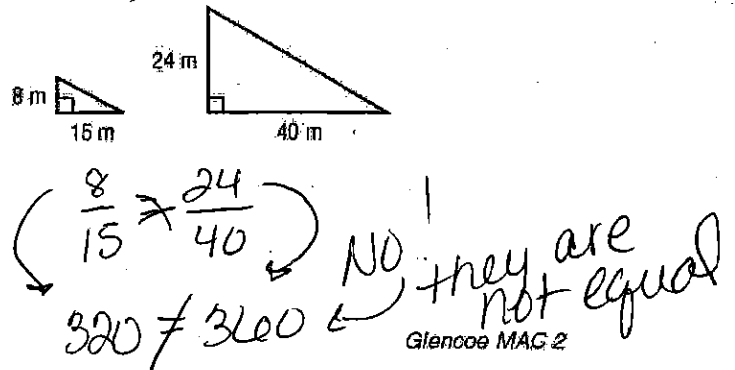
4. 

5. 

6. 

Determine whether each pair of figures is similar. Justify your answer.

7. 

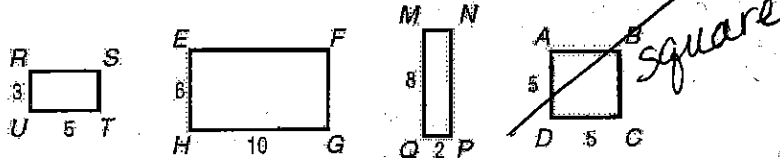
8. 

11-6

Practice

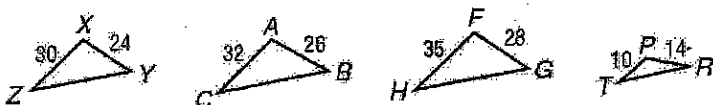
Similar Figures

1. Which rectangle is similar to rectangle *RSTU*?



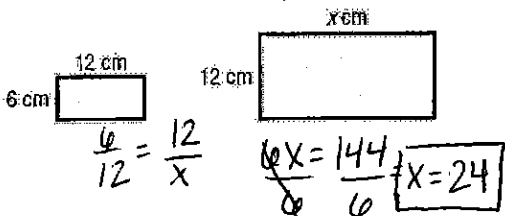
SKIP

2. Which triangle is similar to triangle *XYZ*?

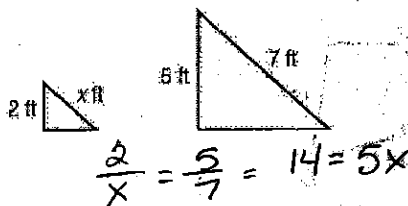


Find the value of *x* in each pair of similar figures.

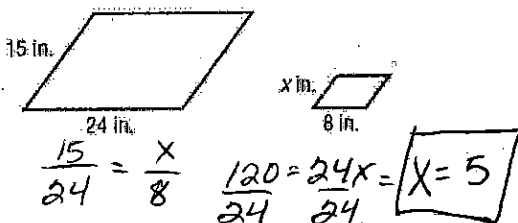
3.



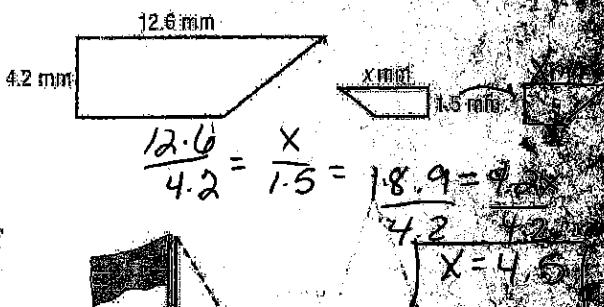
4.



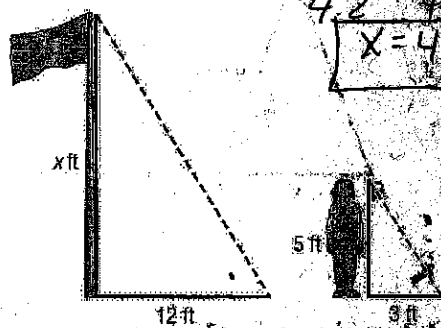
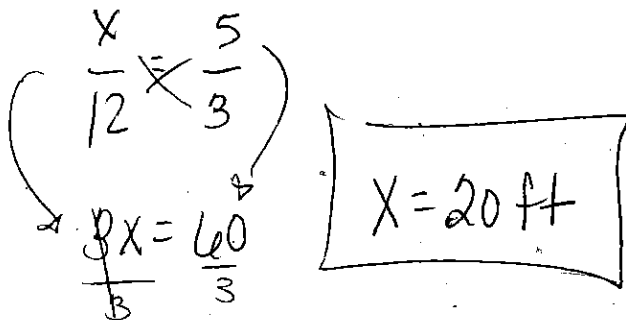
5.



6.



7. **FLAGPOLES** Tasha wants to find the height of the flagpole at school. One morning, she determines the flagpole casts a shadow of 12 feet. If Tasha is 5 feet tall and casts a shadow of 3 feet, what is the height of the flagpole?



Copyright © Glencoe/McGraw-Hill, a division of The McGraw-Hill Companies, Inc.

Lesson 11-6